

adhesives

ceramics

chemicals

coatings

cosmetics

paint

foods

inks

pharmaceuticals

plastics

JAYGO
INCORPORATED

*Mixing Technology for the 21st
Century and Beyond...*



*Plough and Turbulent Paddle
Blenders & Dryers*

J A Y G O J T B B A T C H M I X E R

Range of Applications

JAYGO's JTB BLENDER can be utilized for blending dry, powdery, granular, fibrous, and moist solids and liquids together with pasty products up to and including highly viscous masses.

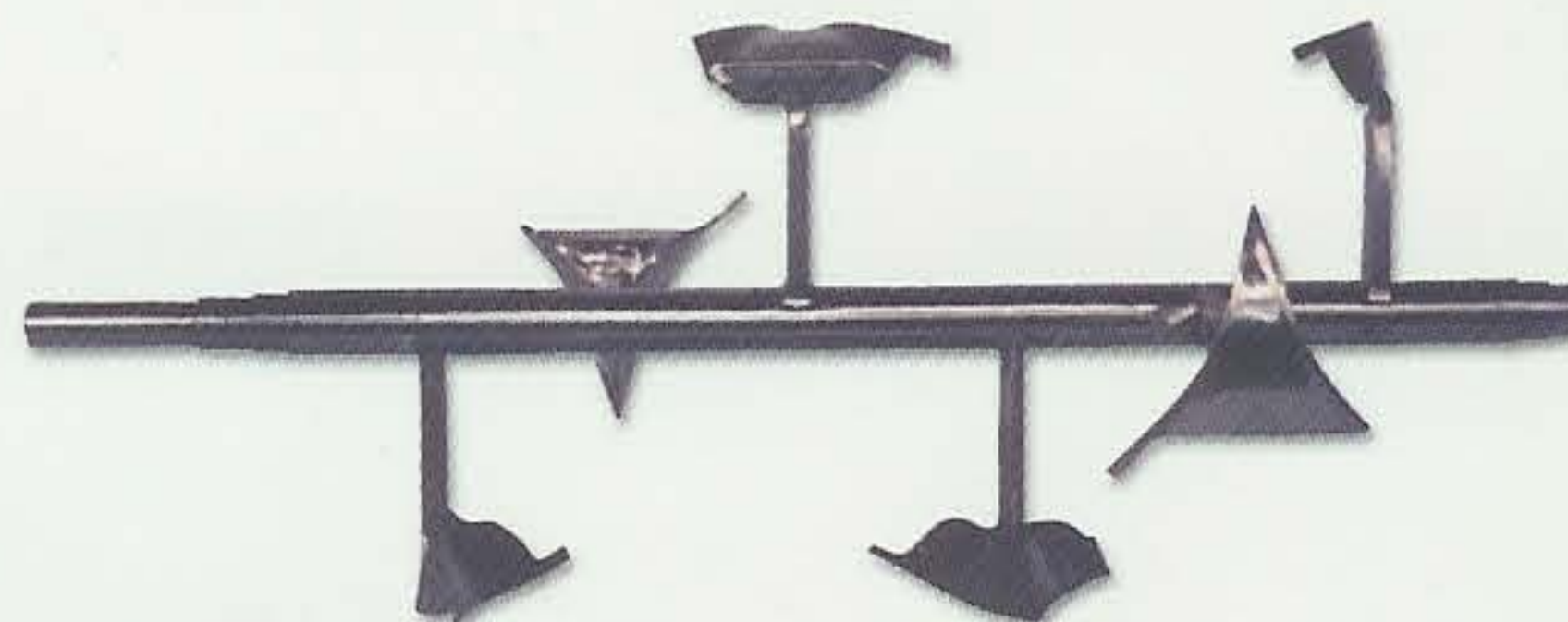
The JAYGO JTB MIXER can be used for numerous processes, including compounding, fine mixing, dispersing, suspending, emulsifying, deaerating, tempering, accelerating chemical or physical reactions, granulating, breaking down agglomerates, etc.

The JAYGO JTB MIXER can handle nearly all types of materials and is particularly suited for such difficult processes as mixing trace elements in proportions of 1 in 100,000 to 1,000,000 parts.

Standard sizes of the JAYGO JTB MIXER range from 0.1 to 200 cubic feet with larger sizes available upon request.

Basic Construction

The JAYGO JTB BLENDER consists of several elements: A centrally mounted horizontal shaft that rotates within a cylindrical vessel, paddles, ploughs, or other similarly shaped mixing elements that are attached to the centrally mounted shaft, special openings at the top of the vessel for feeding materials, access doors, a flush fitting pneumatically or manually operated discharge valve at the bottom of the blender, and a complete drive unit.



JAYGO JTB mixer interior shaft, with plough type mixing elements.



JAYGO JTB mixer interior shaft, with paddle type mixing elements.

Guards & Safety Devices

All access doors are fitted with safety limit switches to prevent accidents. Drive elements are provided with appropriate safety shrouds and guards.

Typical Operation

The blender is filled to 70% capacity, allowing space for individual particles to be dispersed within the main area of mixer. The mixing elements create intense axial and radial movement causing the product to move throughout the mixing space. The shape and angle, together with the adjustment and rotation of the mixing elements cause the product to be lifted off the surface of the cylindrical wall. The product is automatically discharged while the machine is running to prevent product separation.



JAYGO JTB 27 in operation in baby food manufacturing plant.

Special Construction With Chopper

The installation of JAYGO's Multichopper in the basic JTB mixer enables the breakdown of agglomerates during the mixing process.

Together with the mixing arms, the JAYGO Multichopper removes lumps in the initial product, chops pasty adhesives, and hinders the formation of agglomerates during the addition of liquids to powders.



JAYGO MULTICHOPPER Unit.

adhesives

ceramics

chemicals

coatings

cosmetics

paint

foods

inks

pharmaceuticals

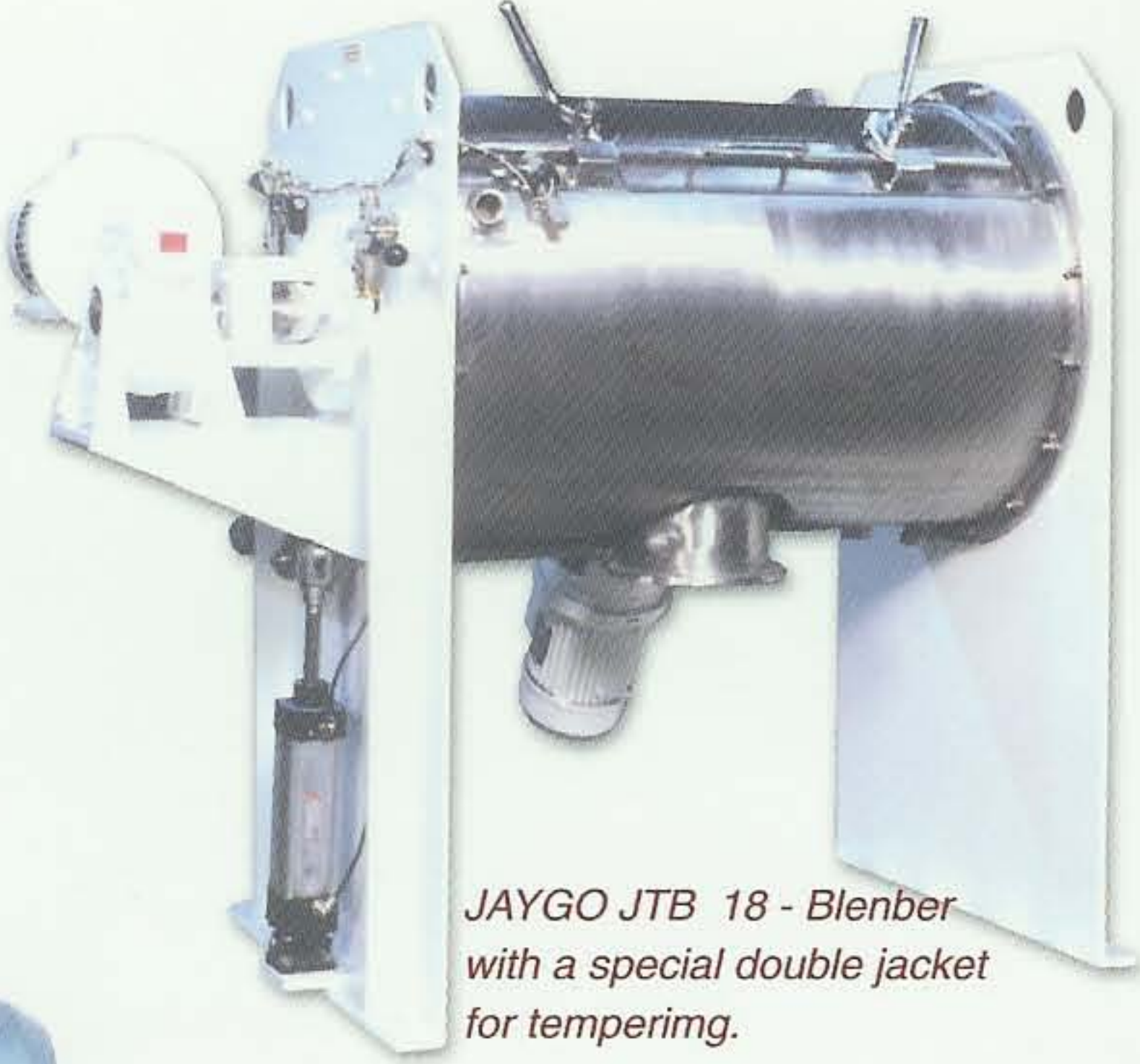
plastics

Special Features

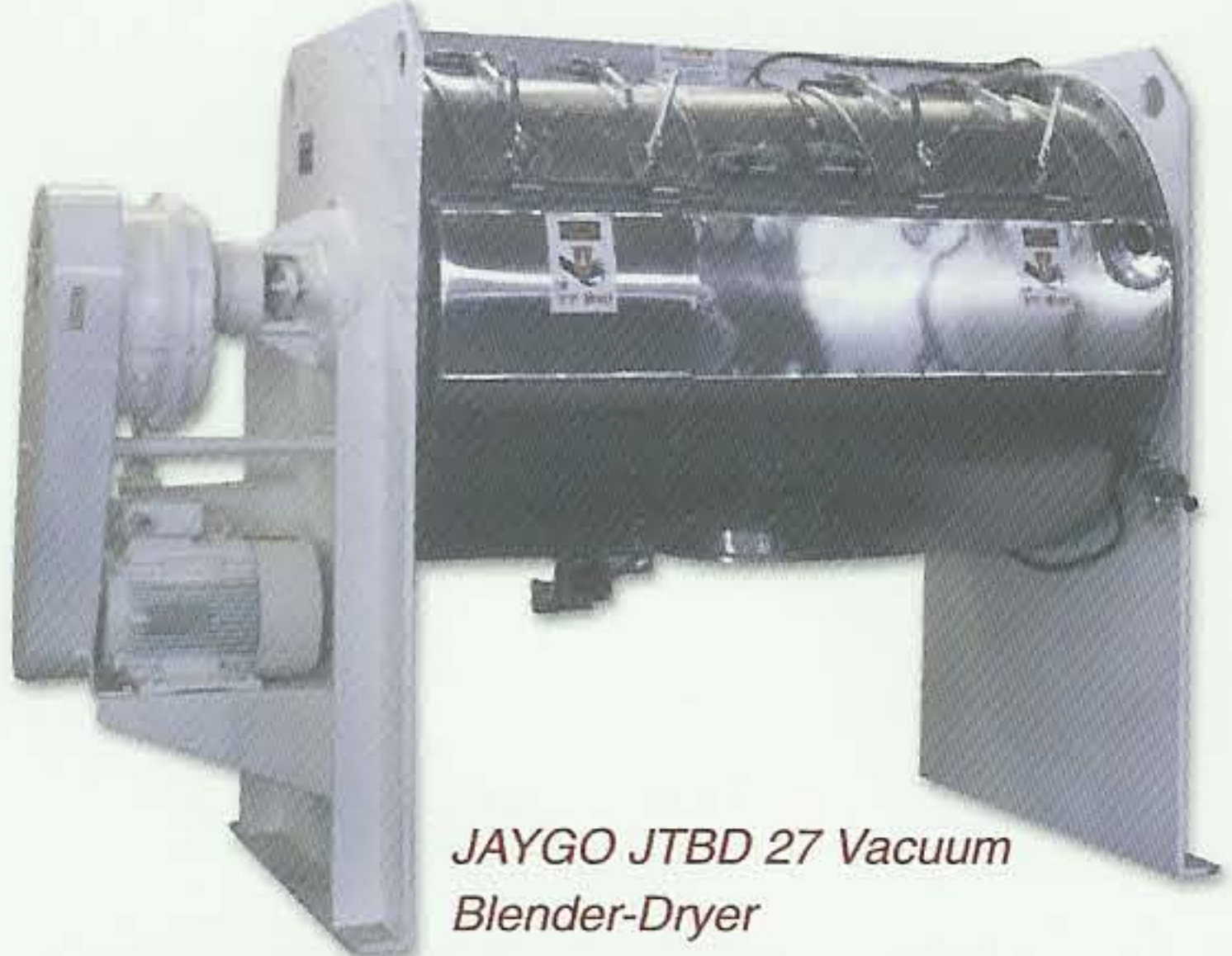
In order to meet special needs, JAYGO provides customized accessories such as: Different mixing elements, double jacketed vessels for heating and cooling, special spray nozzles for liquid addition and coating, vacuum and/or pressure designs, JAYGO's Multichoppers, special discharge valves, explosion proof construction, electrical control panels, etc.. All these and more can be supplied upon request.



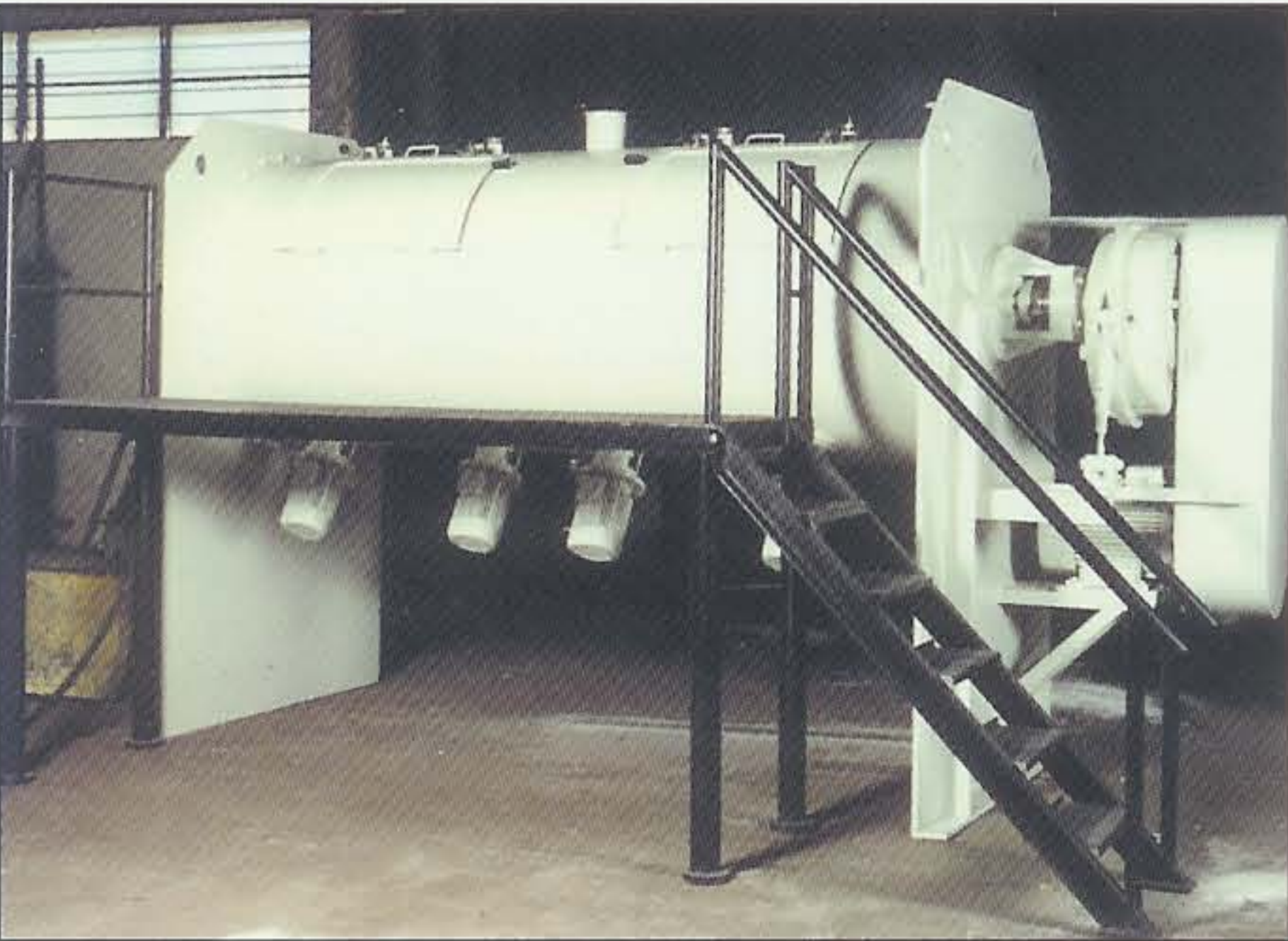
JAYGO JTB Lab Mixer - JTB 0.17.



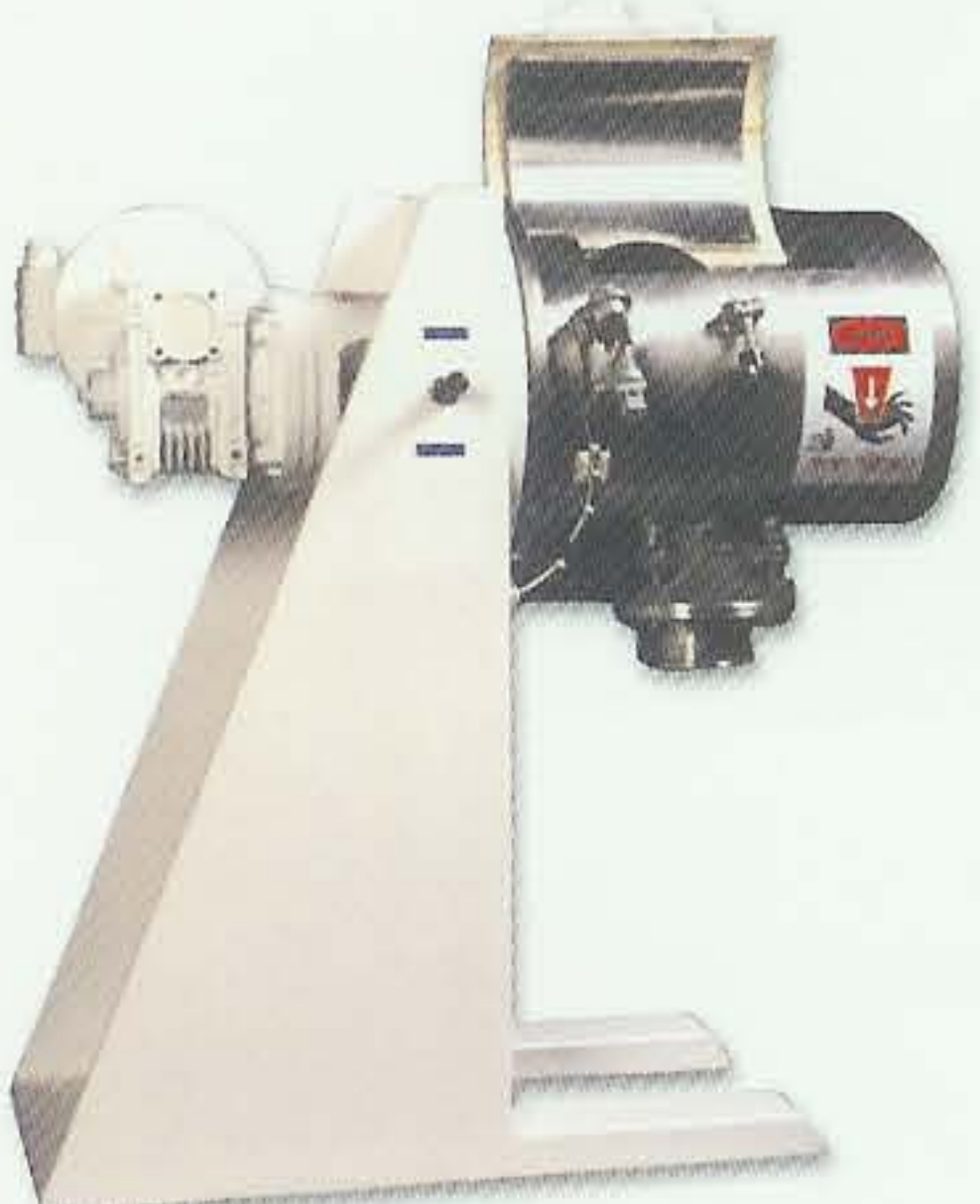
JAYGO JTB 18 - Blender with a special double jacket for tempering.



JAYGO JTBD 27 Vacuum Blender-Dryer



JAYGO JTB 107 Blender with four MULTICHOPPER Units.



JAYGO JTB 2 - the ideal pilot size unit.

JAYGO JTBD Vacuum Dryer

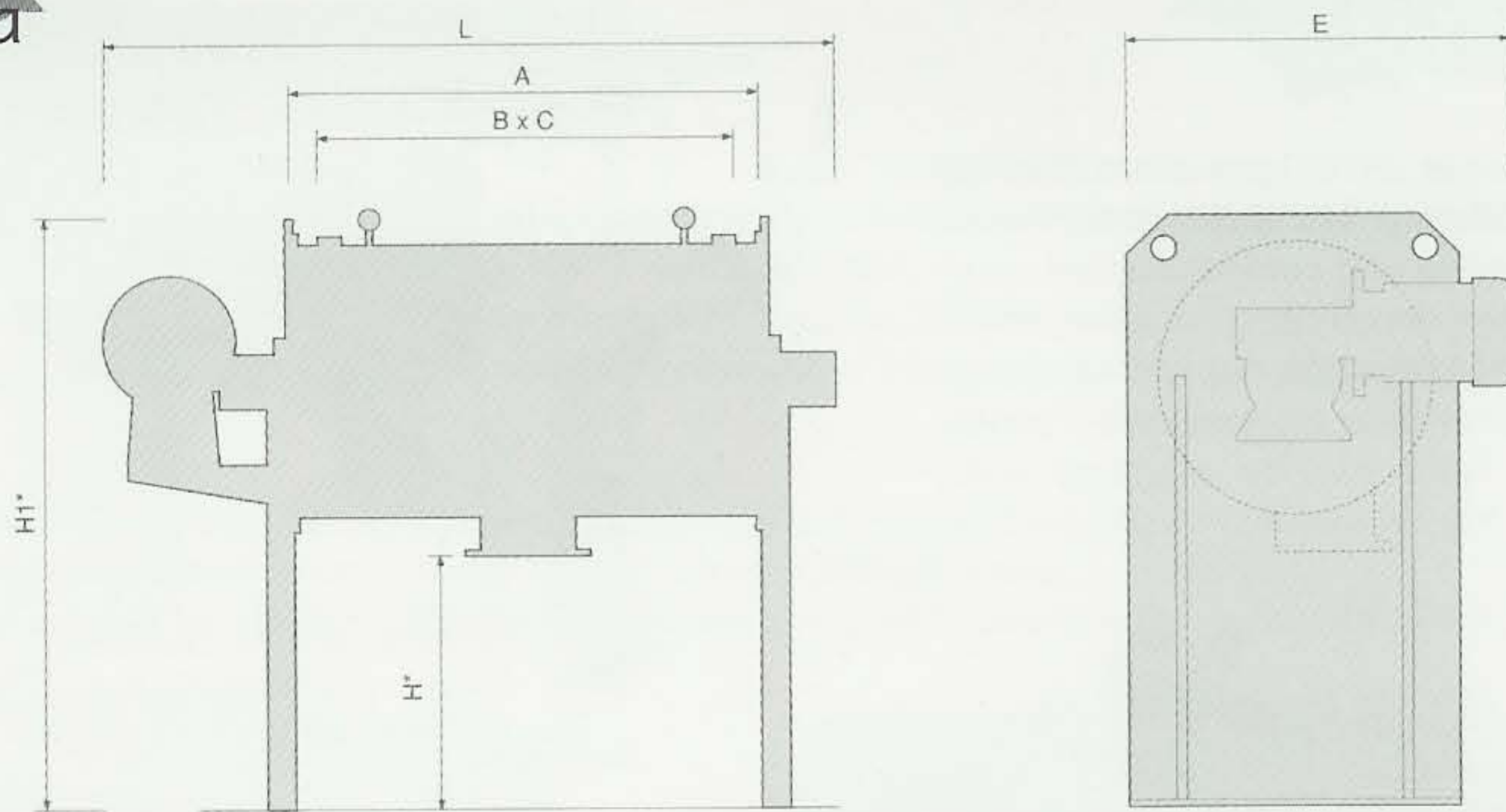
The JAYGO Vacuum Blender-Dryer systems include vacuum systems, condensers with receiver tanks, and heating/cooling systems. These are used primarily for agglomerate free rapid drying, reactions systems of different substances, extraction, and sterilization.



JAYGO special JTBD 71 Blender-Dryer with two Multichoppers, single side / single support drive system for ease of cleaning, with dust filter, and condenser unit.

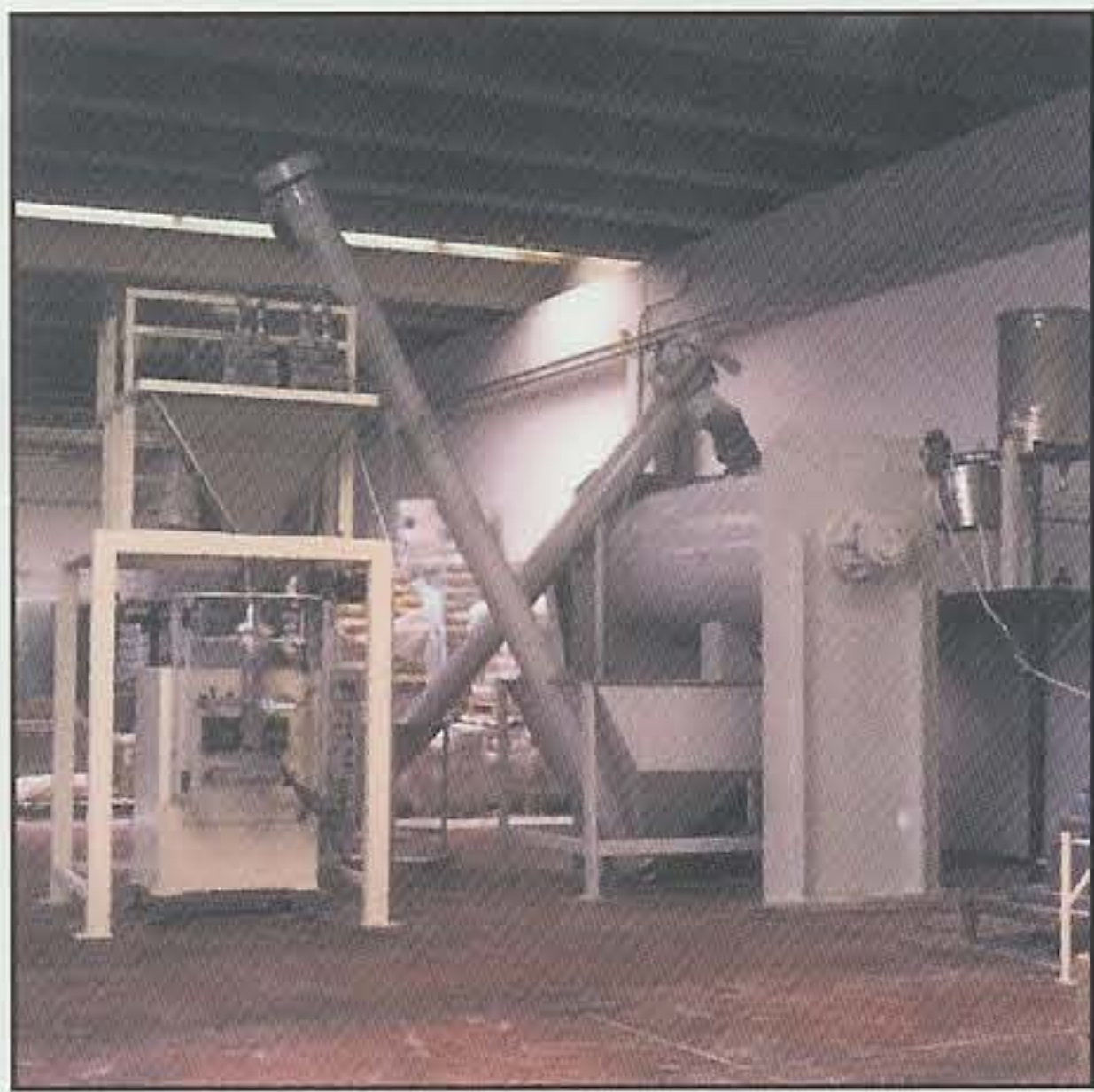
adhesives
ceramics
chemicals
coatings
cosmetics
paint
foods
inks
pharmaceuticals
plastics

Technical Data



Model	Total Capacity cubic feet	Working Capacity cubic feet	H.P	A	B	C	E	H*	H1*	L
JTB-02	0.17	0.12	1	7	5	4	20	-	-	31
JTB-07	0.7	0.5	1-1.5	13	11	6	20	-	-	35
JTB-2	2	1.4	1-1.5	19	15	10	22	18	37	35
JTB-2.5	2.5	1.75	1-2	23	16	12	24	18	37	41
JTB-3.5	3.5	2.45	1.5-3	26	19	15	24	18	40	43
JTB-7	7	4.9	2-5	35	28	15	29	20	46	55
JTB-10	10	7	3-7.5	38	28	16	33	20	51	61
JTB-18	18	12.6	5-10	45	21	16	37	20	55	79
JTB-27	27	19	7.5-15	59	18	20	43	24	63	89
JTB-36	36	25	10-20	75	30	20	45	24	71	102
JTB-54	54	38	10-25	83	30	20	47	24	79	126
JTB-71	71	48	15-30	83	30	20	53	24	87	138
JTB-107	107	75	20-40	118	30	20	59	31	94	161
JTB-180	180	125	30-50	118	30	20	64	31	110	169

All specifications and illustrations are approximate and are not binding. JAYGO reserves the right to modify these designs without notice.



JAYGO JTB mixers are widely used in different industries around the globe.



675 Rahway Avenue, Union, NJ 07083
 908/688-3600 Fax: 908/688-6060
 Call Toll Free: 1-888-81-JAYGO
 E-mail: sales@javgoinc.com

Represented by:

JANAVAS 03-3539/00 ISRAEL