

adhesives

ceramics

chemicals

coatings

cosmetics

paint

foods

inks

pharmaceuticals

plastics

JAYGO
INCORPORATED

**Double Ribbon,
Paddle & Continuous
Blenders/Dryers**



**21st Century Technology
For Today's Processing Equipment...
Designed & Built To Be The Best!**

Double Ribbon, Paddle & Continuous Blenders/Dryers

Efficient and Economical Mixer & Dryer Designs for the Chemical, Food and Pharmaceutical Processing Industries

The Jaygo Double Ribbon Blender is a horizontal mixer/blender for a wide variety of dry, liquid or slurried products. These versatile mixers are efficient and economical. Designs are available for both the Chemical industry and also the sanitary requirements of the Food and Pharmaceutical industries. USDA and 3A DAIRY accepted designs.

The double ribbon mixing elements and "U" shaped mixing trough combine to provide an efficient mixing system utilizing the outer ribbon to move material toward the discharge and the inner ribbon to move material in the opposite direction (See Figure 1). The dual motion of the product back and forth combined with rotation provides fast and efficient mixing and blending.

The ribbons are welded to support arms on a single rotating shaft which is supported by dust-proof tapered roller bearings external to the mix trough. The ribbon assembly is internally threaded to shaft stub ends for sanitary designs. Chemical and non-sanitary applications are provided with flanged shaft ends. These designs facilitate removal of the ribbon assembly.

All welds on the trough interior and ribbons are continuous and ground smooth.

Standard designs from 1 to 525 cubic foot. Larger sizes are available. Motor drives available with up to 250 horsepower. Heavy duty drives and gear reducers can be designed for dead-load starting. Specifications can be changed to meet special requirements.

**21st Century Technology
For Today's Processing Equipment...
Designed & Built To Be The Best!**

Design Options

- Trough Materials: carbon steel, all grades of stainless steel and special alloys.
- 2B, #4 or other finishes available on internal and external surfaces.
- Complete electrical control panels and motor starter packages (NEMA 4, 4X, 7, 9 or 12).



Paddle Design

- Paddle Mixer designs available (fixed or adjustable paddles).
- Dimple, double wall or half-pipe trough jackets for heating, cooling or drying applications. ASME code/ stamp when required.
- Safety grating on top of the trough for safe loading of materials.
- Vacuum trough construction for drying or deaerating.
- Fixed or variable speed drive.
- TEFC or explosion proof motor.



Side Entering Choppers



Chopper Blade

- Side entering high speed choppers.
- Discharge Valves: Slide gate, Knife gate, flush bottom ball, or plug.
- Manual or pneumatic discharge valve operation.
- Tilt to discharge design.
- Spray systems for liquid addition.
- Double trough/mixer designs.

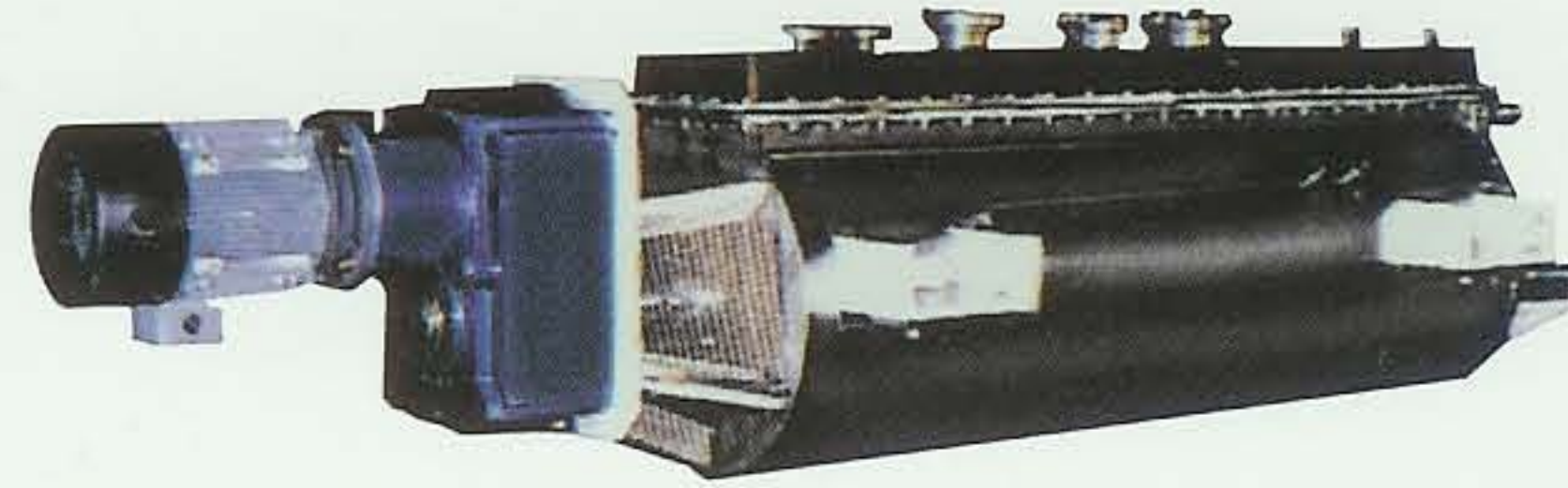


Jaygo Model JRB-80VD

Double Ribbon Blender/Dryer constructed in stainless steel, designed for use in the fine chemical industry. Blender designed for vacuum, pressure, heating and cooling. Unit includes 2 inspection doors and special clutch for starting under full load conditions.

Jaygo Model JRB-30VD

Double Ribbon Blender/Dryer for use in the nuclear waste industry. Constructed in Hastelloy. Unit can be supplied with either double ribbon or paddle agitator. Unit includes insulation and protective sheathing.



Jaygo Model JRB-10H

Double Ribbon Blender used for heating food products. Unit shown constructed in stainless steel with jacket and insulation. Supplied with mezzanine, dumping chute, and controls.

All mixers provided with safety limit switches on each cover section. Switches should be integrated into customers electric controls for safe operation.

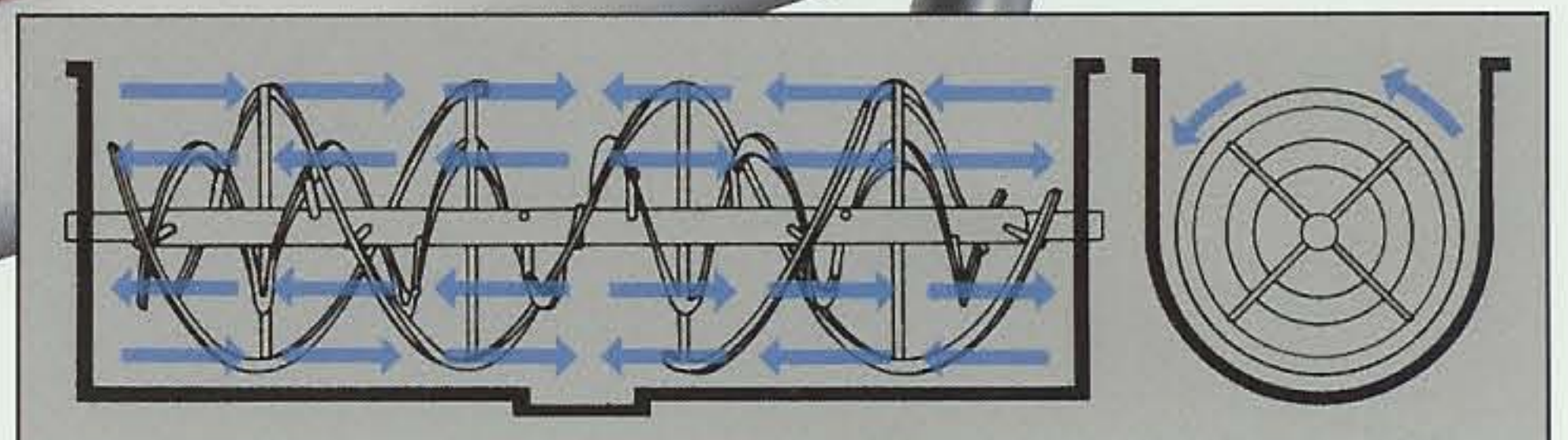
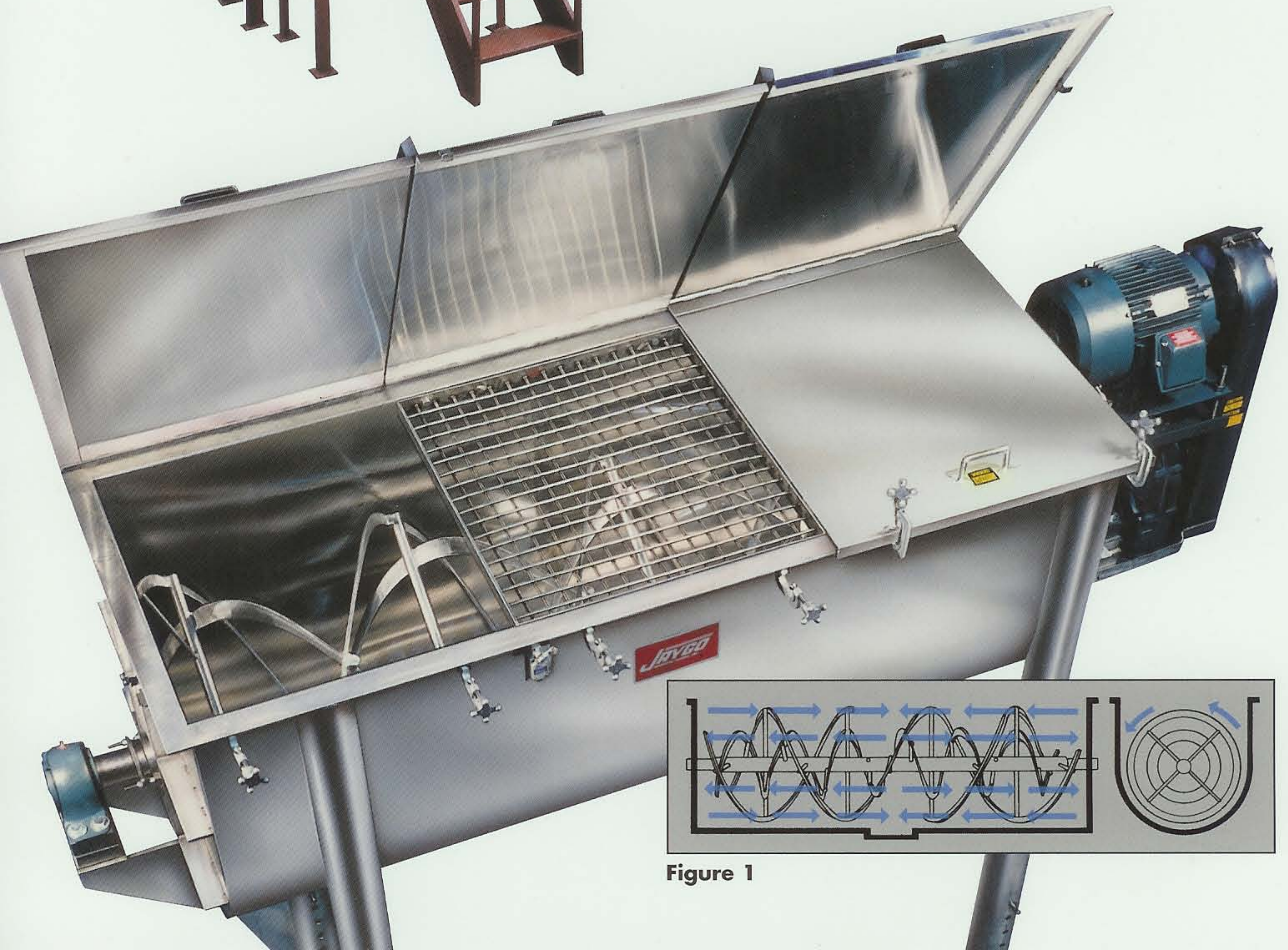
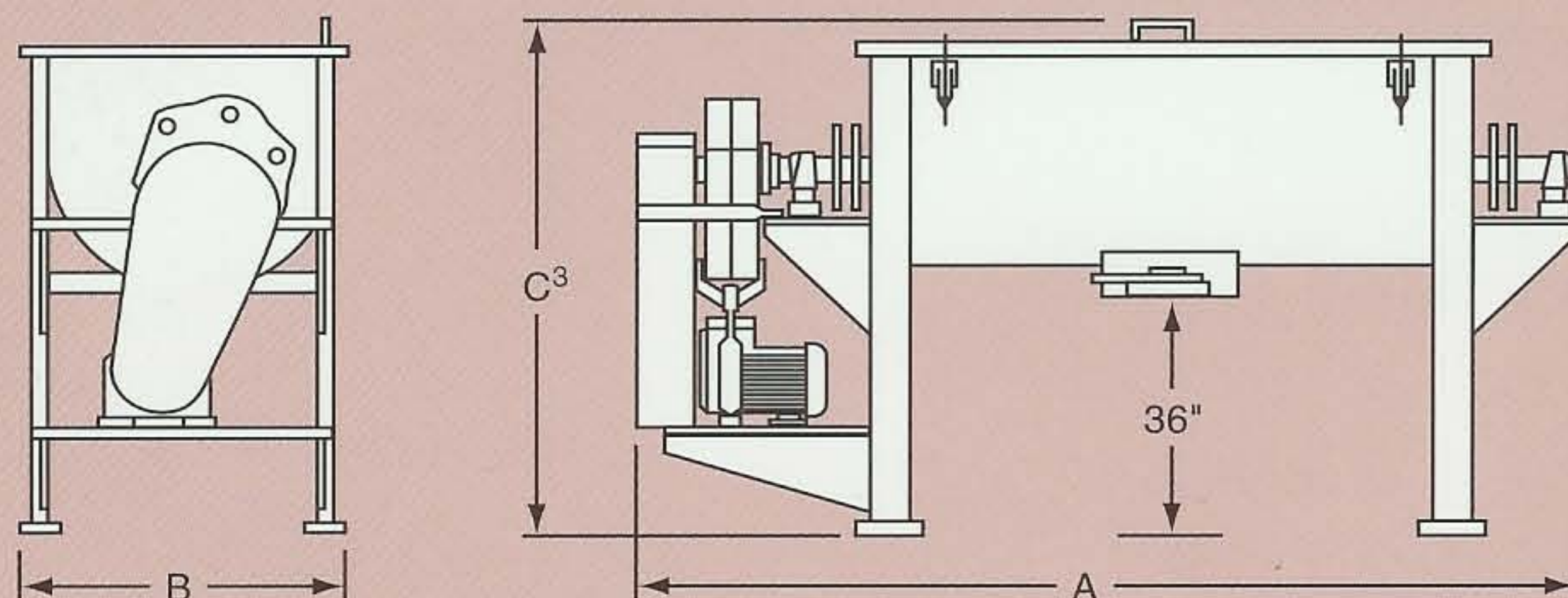


Figure 1

Jaygo Double Ribbon Blender Specifications



Model Number	Working Capacity Cubic Feet	Standard HP ¹	Agitator RPM	Trough Dimensions			Overall Dimensions ²			Shipping Weight Lbs.
				Width	Length	Height	A	B	C	
JRB 1	1	1	95	13	16	15	42	22	60	300
JRB 5	5	2	72	17	38	21	72	25	66	800
JRB 10	10	3	59	21	48	25	84	29	81	1,200
JRB 18	18	5	51	24	60	29	98	33	70	1,500
JRB 25	25	5	42	29	60	34	98	38	79	2,300
JRB 36	36	7.5	41	30	78	34	119	39	79	2,800
JRB 50	50	10	36	34	84	38	128	43	83	3,900
JRB 62.5	62.5	15	35	35	96	40	141	45	85	4,600
JRB 71	71	15	32	38	96	42	143	47	87	5,200
JRB 80	80	20	32	38	108	42	155	47	87	6,000
JRB 100	100	20	31	40	120	44	172	49	89	6,600
JRB 120	120	25	28	44	120	48	172	53	93	8,000
JRB 155	155	30	25	50	120	54	177	58	99	9,300
JRB 180	180	30	23	54	120	58	177	62	103	10,200
JRB 215	215	40	23	54	144	58	201	62	103	11,475
JRB 270	270	40	20	60	144	64	203	68	109	12,750
JRB 325	325	50	19	66	144	70	203	74	115	14,025
JRB 385	385	50	17	72	144	76	203	80	121	15,300
JRB 525	525	60	17	72	195	76	254	81	121	20,500

In order to provide our customers with the finest products, manufactured in the most up-to-date manner, Jaygo Incorporated reserves the right to make design or specific construction changes without notice.

¹ Approximate HP for bulk density of 32 lbs/ft³ Higher HP available-consult factory.

² Overall dimensions in inches are approximate.

³ Overall height based on 36" floor to discharge valve height. Height can be altered.

Jaygo, Inc. also manufactures and supplies:

- Conical Screw Mixer/Dryers
- "V" and Double Cone Blenders
- Agitated Vacuum Dryers and Filters
- High Speed Dispersers
- Homogenizers
- Twin and Multiple Shaft Mixers
- Planetary Mixers
- Sigma ("Z") Blade Mixers and Mixer Extruders
- Vacuum Deaerators
- Pharmaceutical Vacuum Liquid Processing Systems



Laboratory Size Ribbon Blender



Sanitary and Pharmaceutical Quality GMP

Represented by:

JAYGO
INCORPORATED

675 Rahway Avenue, Union, NJ 07083

908/688-3600 • Fax: 908/688-6060

Call Toll Free: 1-888-81-JAYGO

E-Mail: jaygoinc@aol.com